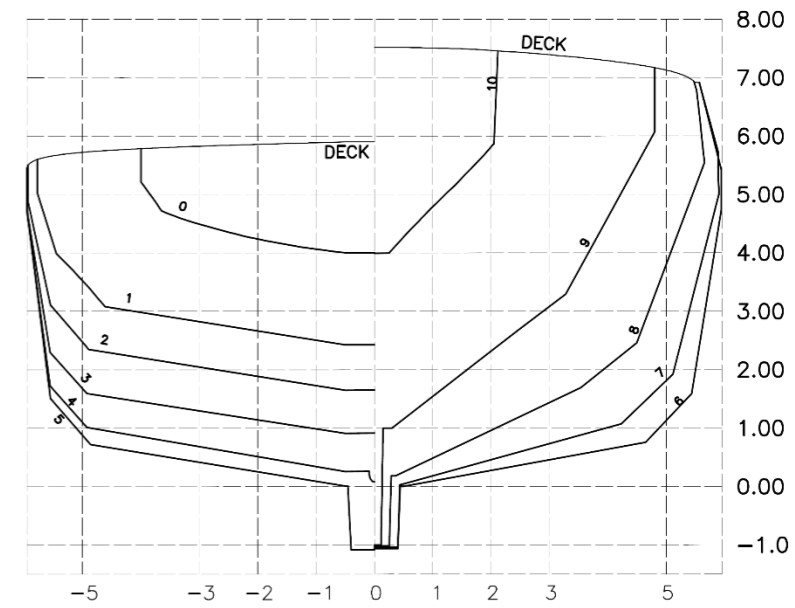
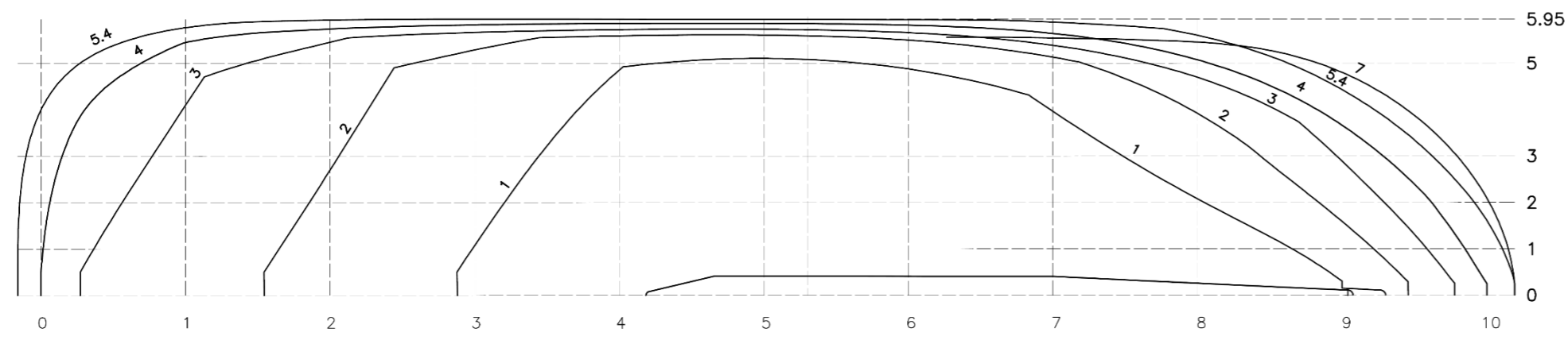


SHEER PLAN



BODY PLAN



HALF BREADTH PLAN

SEE LETTER E-126233-180617  
NOTED FOR INFORMATION



14-SEP-2021

PLAN ENDORSED FOR IN-PRINCIPLE APPROVAL

MAIN PARTICULARS

LENGTH O.A	abt 33.0 [m] [Including Fender]
LENGTH B.P	abt 31.0 [m]
BREADTH (MLD)	abt 11.9 [m]
DEPTH (MLD)	abt 5.4 [m]
DRAFT (HULL)	abt 3.9 [m]
COMPLEMENT	11 PERSONS
BOLLARD PULL	60 T @100% MCR
INSTALLED POWER	abt 3600 [kW]
CLASS NOTATION	IRS -SWASTIKA SUL, TUG SWASTIKA IY, AGNI 1 (2400 m3/hr)

Rev. I	30-Aug-21	For publishing on IPA website	AAB	ABK	HUR
No:	Date	Description	Drawn	Checked	Approved
ASTDS		60T BP TUG			
DESIGN NO : CT3360		LINES PLAN			
COCHIN SHIPYARD LIMITED P.O. Bag 1653, COCHIN-682015, INDIA		1:130 Scale	A3 Format	CT3360 Project No.	CT3360-101-003 Dwg. no.

This design was developed by Cochin Shipyards Ltd. for Indian Ports Association as a part of ASTDS Package. CSL does not make any representation or warranties, express or implied, as to the completeness, accuracy, suitability of the design and it shall be the responsibility of the respective builder/end-user to make its own assessment / evaluation of any such completeness, accuracy, suitability of the design prior to construction and any consequence thereof.