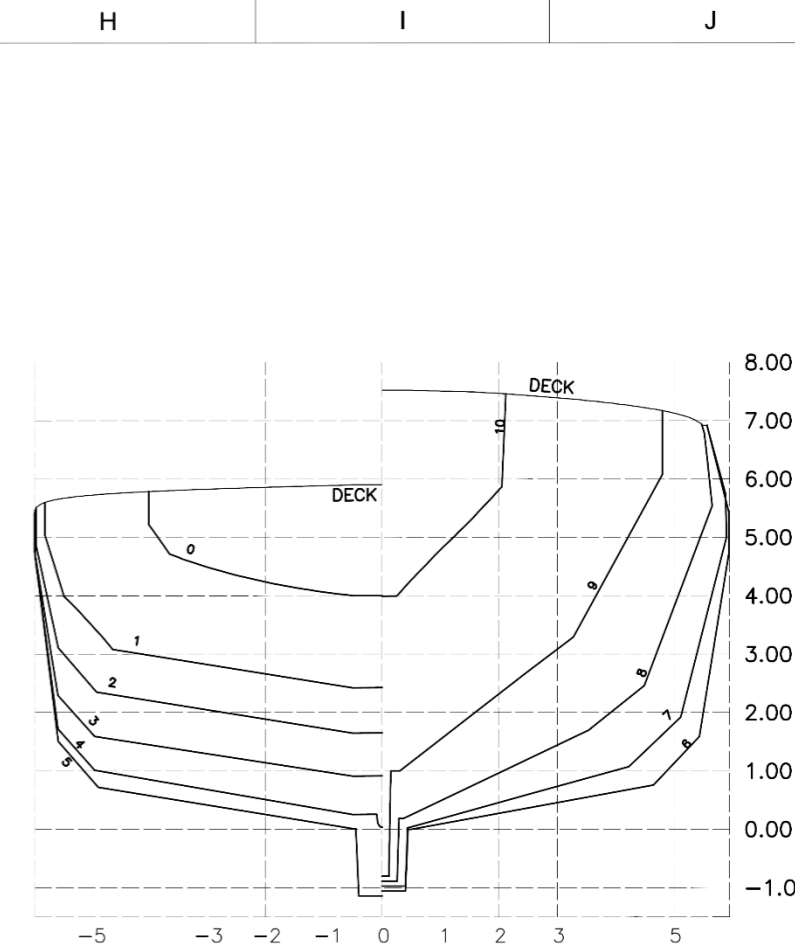


**SHEER PLAN**

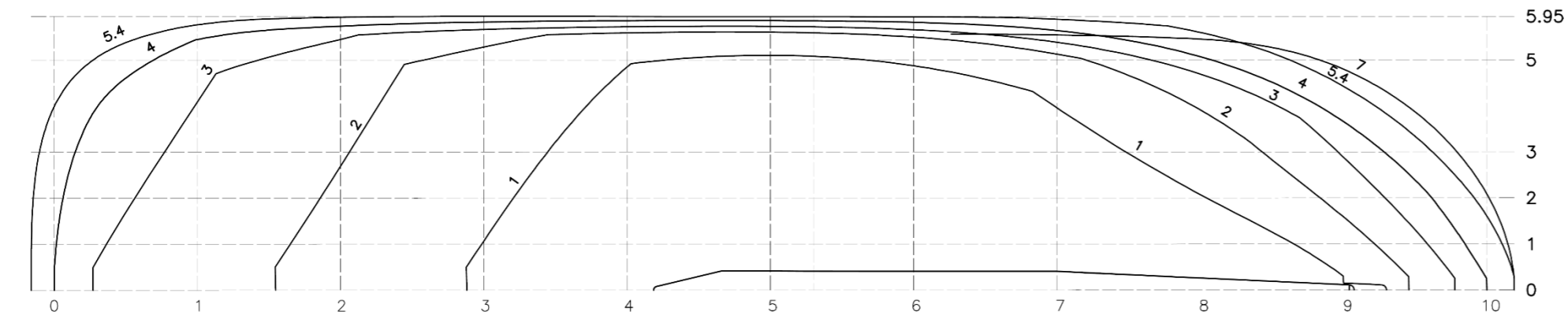


**BODY PLAN**



**MAIN PARTICULARS**

LENGTH O.A.....	abt 33.0 [m] [Including Fender]
LENGTH B.P.....	abt 31.3 [m]
BREADTH (MLD).....	abt 11.9 [m]
DEPTH (MLD).....	abt 5.4 [m]
DRAFT (HULL).....	abt 4.2 [m]
COMPLEMENT.....	14 PERSONS
BOLLARD PULL .....	70 T @100% MCR
INSTALLED POWER .....	abt 4100 [kW]
CLASS NOTATION.....	IRS - SWASTIKA SUL,TUG SWASTIKA IY,AGNI 1 (2400m3/hr)



**HALF BREADTH PLAN**

SEE LETTER E-126288-180632  
NOTED FOR INFORMATION



14-SEP-2021

PLAN ENDORSED FOR IN-PRINCIPLE APPROVAL

Rev. I	30-Aug-21	For publishing on IPA website	AAB	ABK	HUR
No:	Date	Description	Drawn	Checked	Approved
ASTDS		70T BP TUG			
DESIGN NO : CT3370		TITLE			
COCHIN SHIPYARD LIMITED		1:130	A3	CT3370	CT3370-101-003
P.O. Bag 1653, COCHIN-682015, INDIA		Scale	Format	Project No.	Dwg. no.

This design was developed by Cochin Shipyard Ltd. for Indian Ports Association as a part of ASTDS Package. CSL does not make any representation or warranties, express or implied as to the completeness, accuracy, suitability of the design and it shall be the responsibility of the respective builder/end-user to make its own assessment / evaluation of any such completeness, accuracy, suitability of the design prior to construction and any consequence thereof.