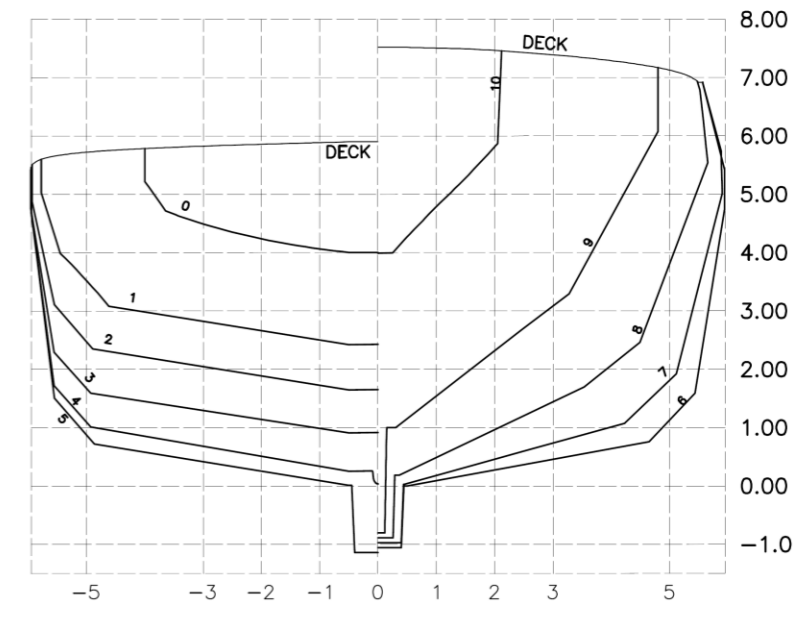
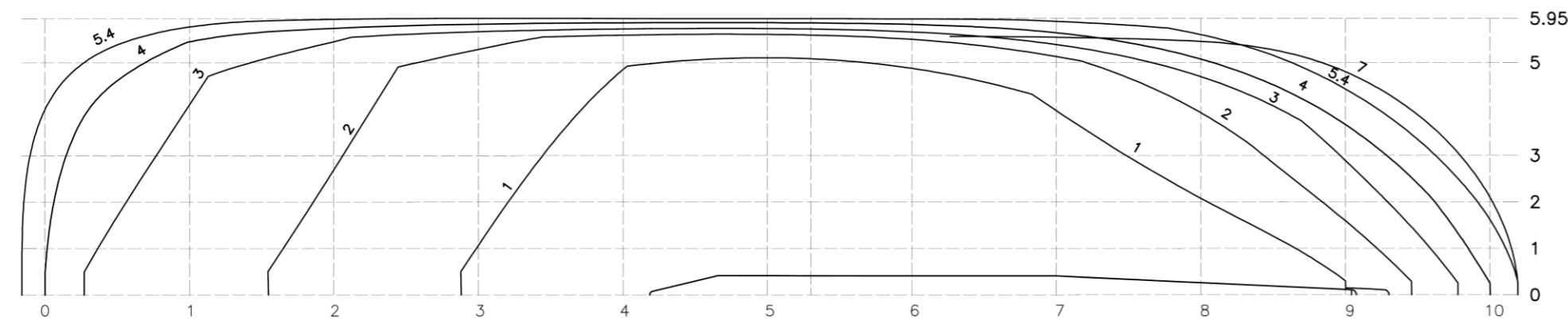


SHEER PLAN



BODY PLAN



HALF BREADTH PLAN

SEE LETTER E-126290-180644
NOTED FOR INFORMATION



14-SEP-2021

PLAN ENDORSED FOR IN-PRINCIPLE APPROVAL



MAIN PARTICULARS

LENGTH O.A.....	abt 33.0 [m] [Including Fender]
LENGTH B.P.....	abt 31.3 [m]
BREADTH (MLD).....	abt 11.9 [m]
DEPTH (MLD).....	abt 5.4 [m]
DRAFT (HULL).....	abt 4.2 [m]
COMPLEMENT.....	14 PERSONS
BOLLARD PULL	80 T @100% MCR
INSTALLED POWER	abt 4800 [kW]
CLASS NOTATION.....	IRS - SWASTIKA SUL,TUG SWASTIKA IY,AGNI 1 (2400m3/hr)

Rev. I	30-Aug-21	For publishing on IPA website	AAB	ABK	HUR
No:	Date	Description	Drawn	Checked	Approved
ASTDS		80T BP TUG			
DESIGN NO : CT3380		LINES PLAN			
COCHIN SHIPYARD LIMITED P.O. Bag 1653, COCHIN-682015, INDIA		1:130 Scale	A3 Format	CT3380 Project No.	CT3380-101-003 Dwg. no.

This design was developed by Cochin Shipyards Ltd. for Indian Ports Association as a part of ASTDS Package. CSL does not make any representation or warranties, express or implied as to the completeness, accuracy, suitability of the design and it shall be the responsibility of the respective builder/end-user to make its own assessment / evaluation of any such completeness, accuracy, suitability of the design prior to construction and any consequence thereof.