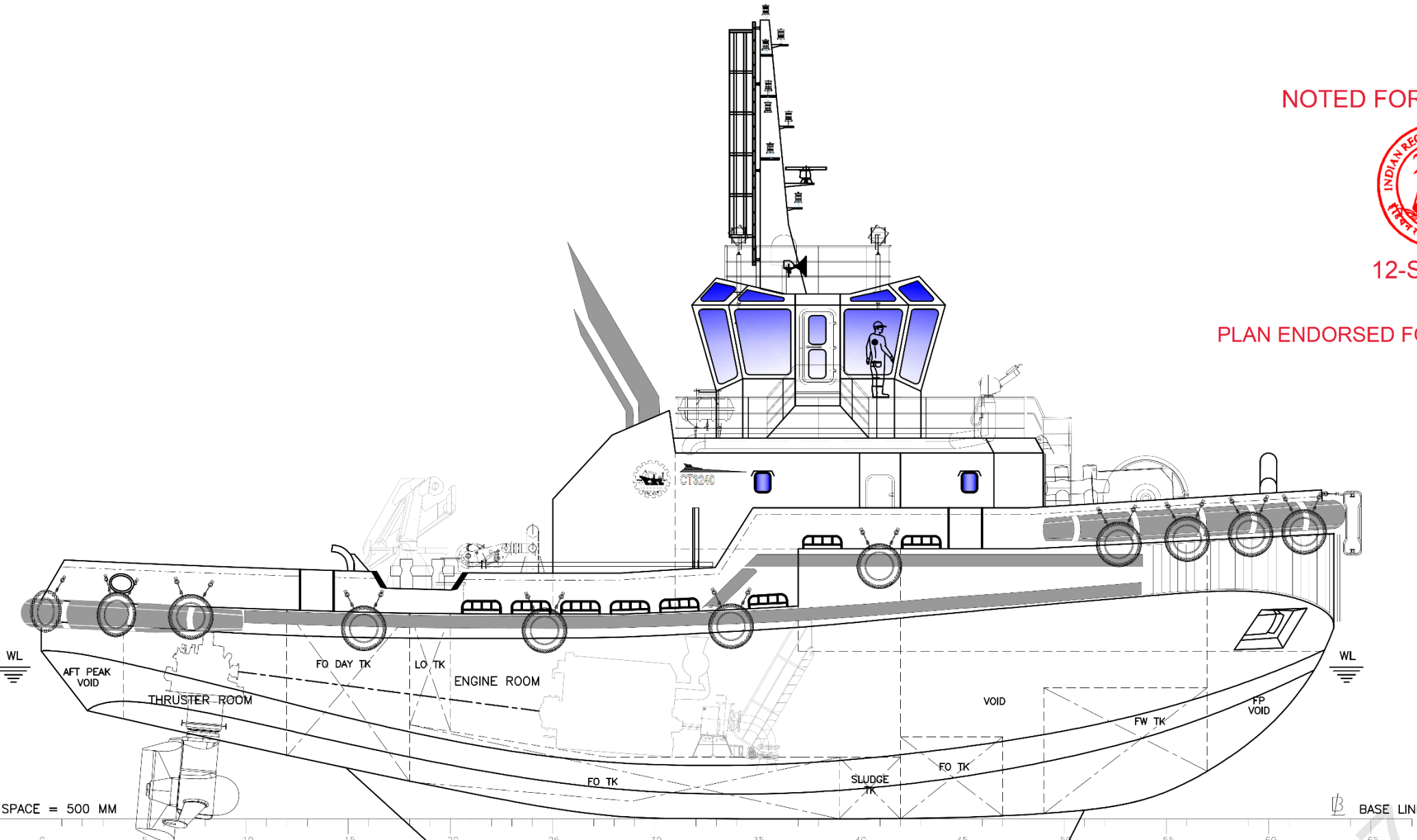


NOTED FOR INFORMATION



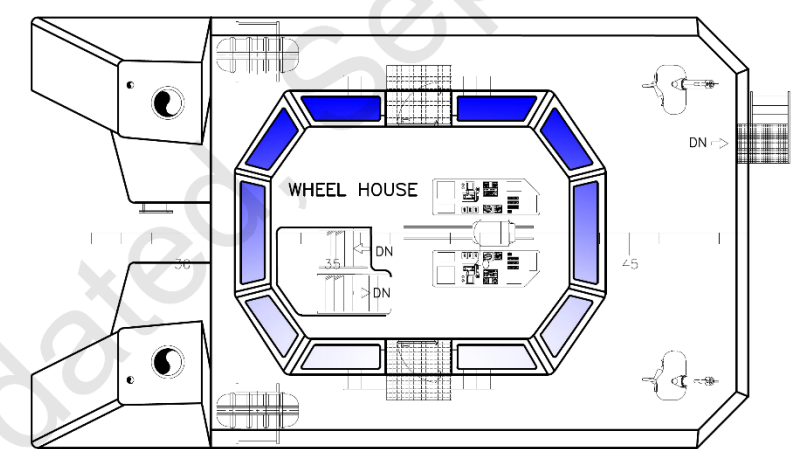
12-SEP-2021

PLAN ENDORSED FOR IN-PRINCIPLE APPROVAL

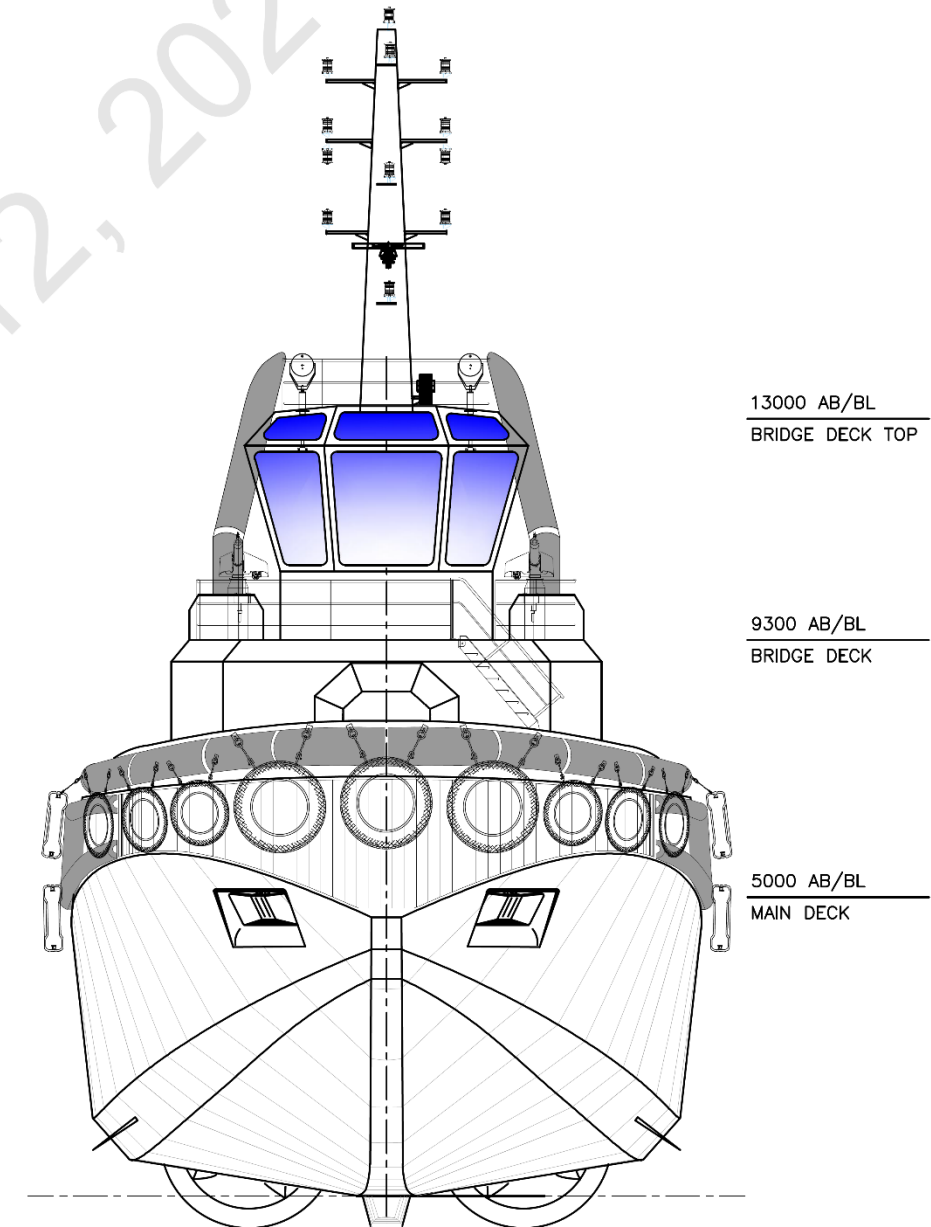


FRAME SPACE = 500 MM

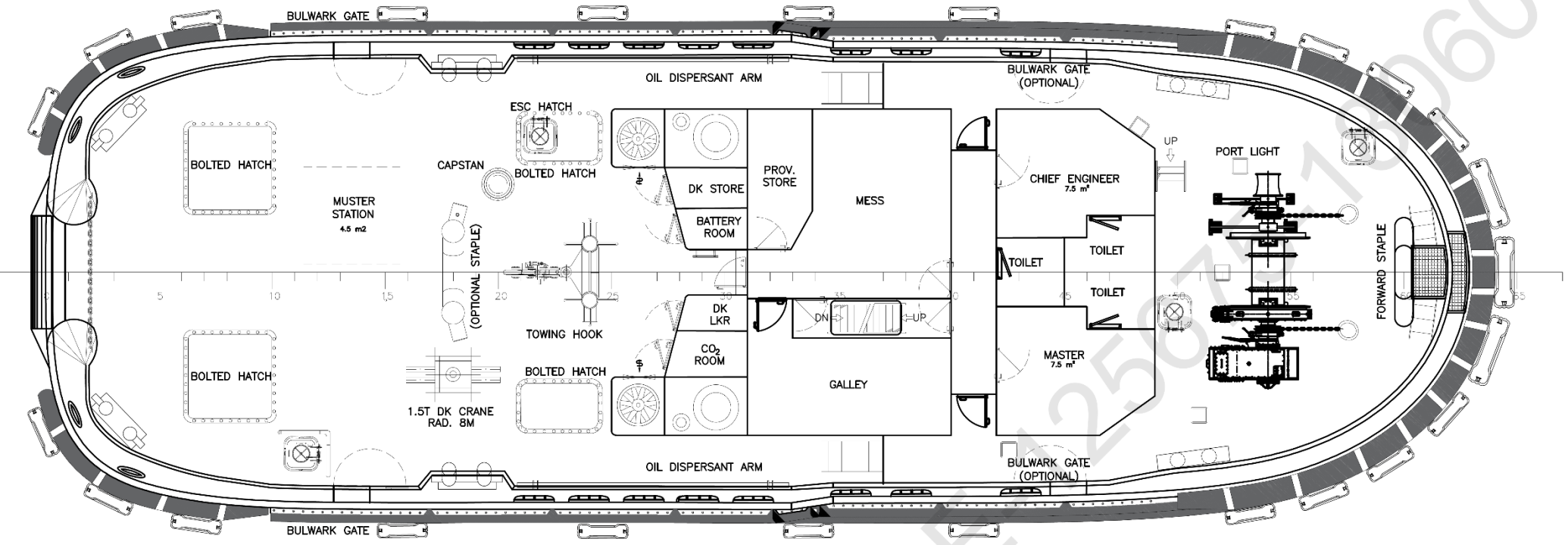
PROFILE



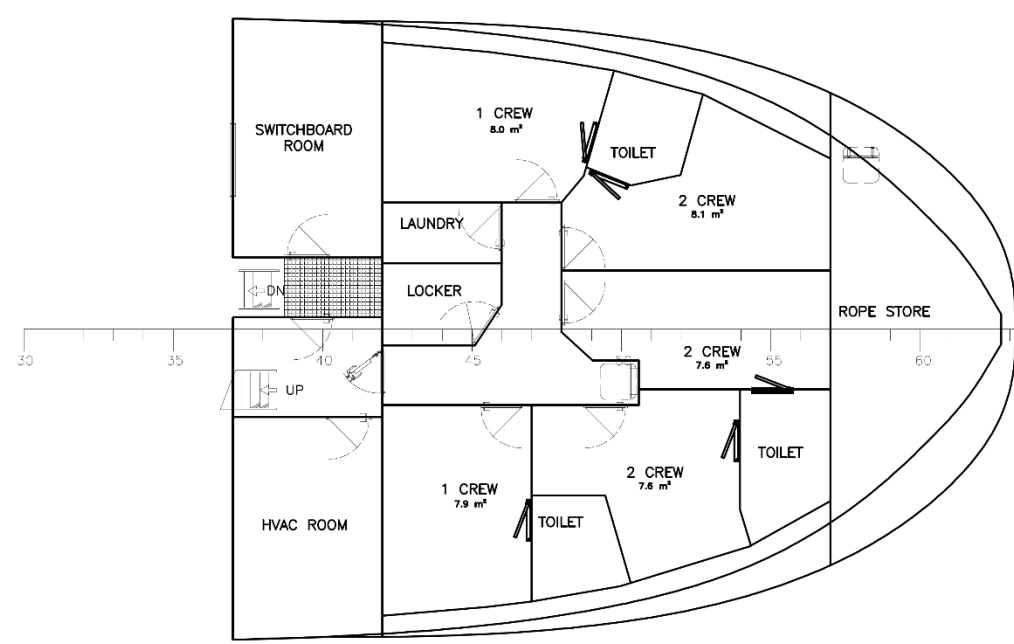
BRIDGE DECK - 9300 A/B



FRONT VIEW



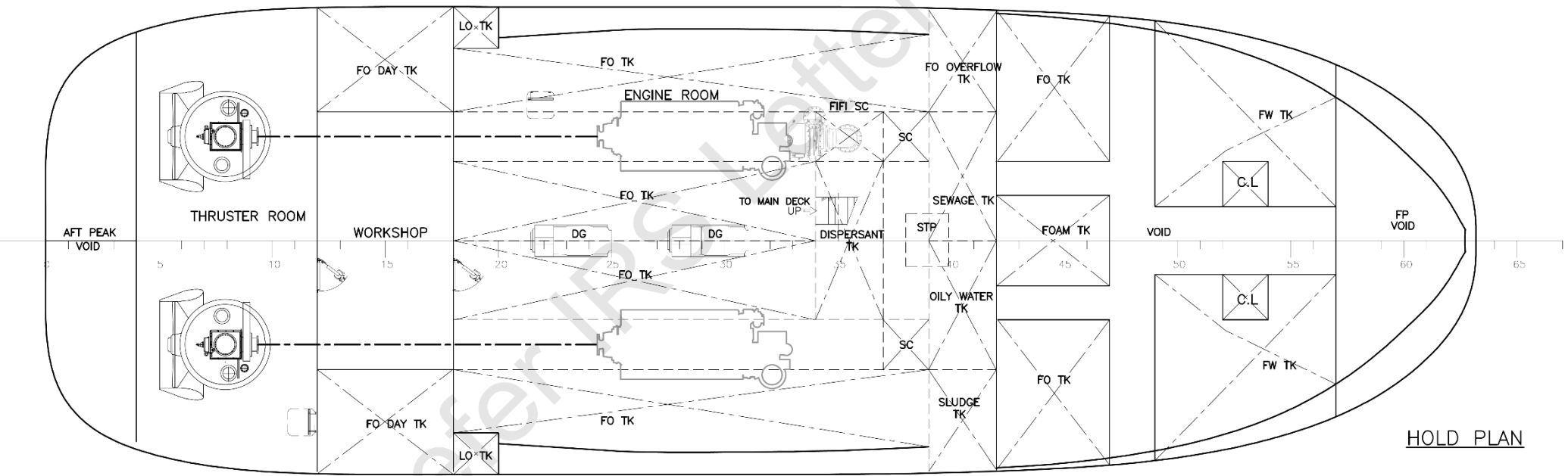
MAIN DECK - 5000/6600 A/B



LOWER ACCOMMODATION - 4100 A/B

MAIN PARTICULARS

| | | |
|-----------------|-------|--|
| LENGTH O.A | | abt 32.00 [m] |
| LENGTH B.P | | abt 30.80 [m] |
| BREADTH (MLD) | | abt 10.50 [m] |
| DEPTH (MLD) | | abt 5.00 [m] |
| DRAFT (HULL) | | abt 3.70 [m] |
| COMPLEMENT | | 10 PERSONS |
| BOLLARD PULL | | 40 T @100% MCR |
| INSTALLED POWER | | abt 2600 [kW] |
| CLASS NOTATION | | SWASTIKA SUL, SWASTIKA IY, TUG, INDIAN RIVER SEA VESSEL TYPE - 4 |



HOLD PLAN

NOTES

- Separate approval to be taken prior to construction for all applicable plans including LSA, LSS, Doors, Accommodation & Ventilation, Freeboard, bow height etc.
- Emergency source of power (batteries), associated transforming equipment, if any, transitional source of emergency power, emergency switchboard and emergency lighting switchboard are to be placed suitably (preferably inside a battery room) above main deck, aft of collision bulkhead.
- External FiFi system indicated in the GA corresponds to configuration 1 as per technical specification (Drw No : CT3240-100-006) & external FiFi system drawing (Drw No : CT3240-814-001). This configuration may be changed based on mutual agreement between the buyer & the builder. Separate class approval to be taken for external FiFi system in such cases.
- Full penetration weld to be provided in way of common boundaries of Foam Tank/ Dispersant Tank with any other tank.
- Height of ventilators to be in accordance with approved prelim. stability report (Drw No : CT3240-101-009)

| | | | | | |
|-------------------|--|-------------------------------|--------|-------------|----------------|
| Rev. I | 30-Aug-2021 | For publishing on IPA website | AAB | ABK | HUR |
| No: | Date | Description | Drawn | Checked | Approved |
| ASTDS | | 40T BP HARBOUR TUG | | | |
| DESIGN NO: CT3240 | | TITLE | | | |
| | | GENERAL ARRANGEMENT | | | |
| | COCHIN SHIPYARD LIMITED P.O. Bag 1653, COCHIN-682015, INDIA | 1:120 | A2 | CT3240 | CT3240-101-001 |
| | | Scale | Format | Project No. | Dwg. no. |

This design was developed by Cochin Shipyard Ltd. for Indian Ports Association as a part of ASTDS Package. CSL does not make any representation or warranties, express or implied as to the completeness, accuracy, suitability of the design and it shall be the responsibility of the respective builder/end-user to make its own assessment / evaluation of any such completeness, accuracy, suitability of the design prior to construction and any consequence thereof.